



# ASTORIA PUBLIC LIBRARY

***“ASTORIA + MID-CENTURY + 21ST CENTURY”***

## Vision

- Explore Ideas
- Engage Minds
- Excite Imagination

## Bond Promises

- Improve accessibility
- Expand Children's space and programming
- Dedicated Teen Space
- Update technology
- Repair the aging building

## 1. Accessibility for all

Incorporate universal design principles to make the library usable by everyone.

## 2. Equity

Reflect equity through community input, design and project decisions.

## 3. Flexibility

Provide flexible space, adaptable to changing needs and uses as community needs, technology and library service models evolve.

## 4. Heart of the Community

A gathering place that is welcoming for all.

## 5. Innovative and inspirational design

Spirit of Astoria + Mid-century building + 21st century library

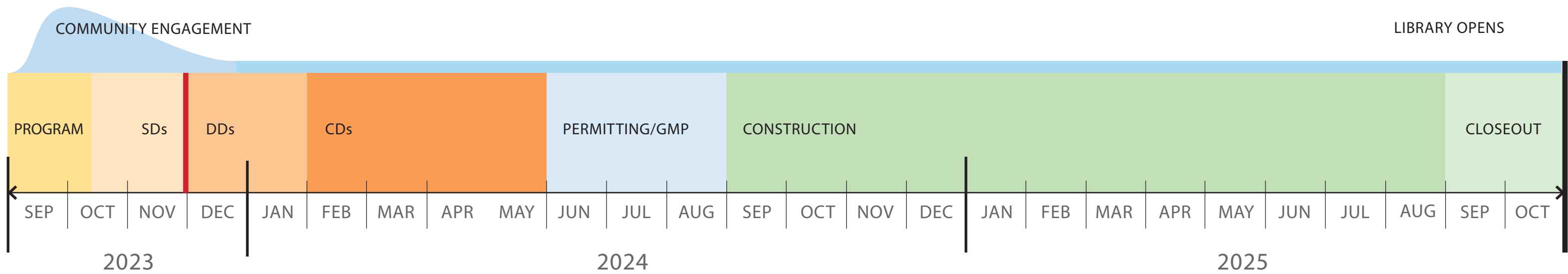
## 6. Sustainability

Include systems, materials and practices.

## 7. Safety

Safety and security for patrons and staff.

## DESIGN PHASES



## Community Meeting

- Wednesday September 13

## Online Questionnaire

- September 13 - October 6
- 51 online responses, 32 in-person responses

## Focus Group Meetings

- Teens
- Seniors
- Advocates for the Homeless
- Families with children
- Staff
- Archives and City Historian

## Online Community Meeting (to present Schematic Design)

- November 29, 2023

## City Council Meeting

- December 4, 2023

How would you describe the spirit or character of Astoria?





What images of culture and nature come to mind?



## COLLECTION

Children's Collection  
Adult Collection / Teen Collection

### TOTAL COLLECTION

Collection Count assumptions:  
Number of Books / foot  
Percent checked out  
(Average for typical Library is 15%  
checked out)

Astoriana  
Archives

## EXISTING

8285 items  
16,529 items

24,814 items

11 /ft. Adult, 21/ft. Children  
10%

1242 items  
TBD

## PROPOSED

8592 items (10% checkout rate)  
16,592 items (10% checkout rate)

25,184 items

11 /ft. Adult, 19/ft. Children  
10%

1242 + items TBD  
TBD

## MEETING ROOMS

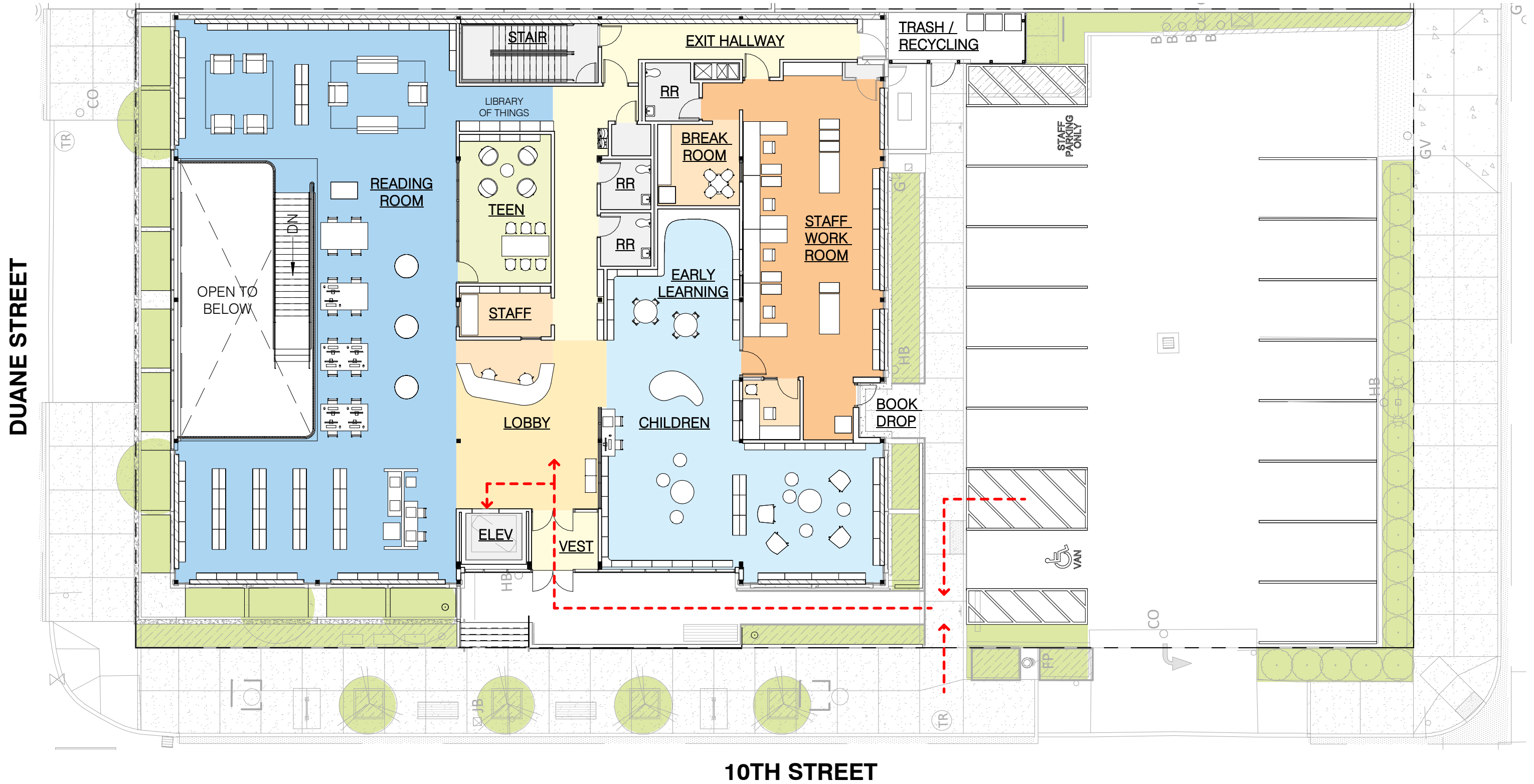
Flag Room - 919 sf

Community Room - 1000-1200 sf  
Astoriana Meeting Room - 300 sf  
Teen Room - 240 sf  
Media/ Medium Meeting Room - 300 sf  
(2) Study Rooms - 140 sf each  
(Preliminary room sizes)

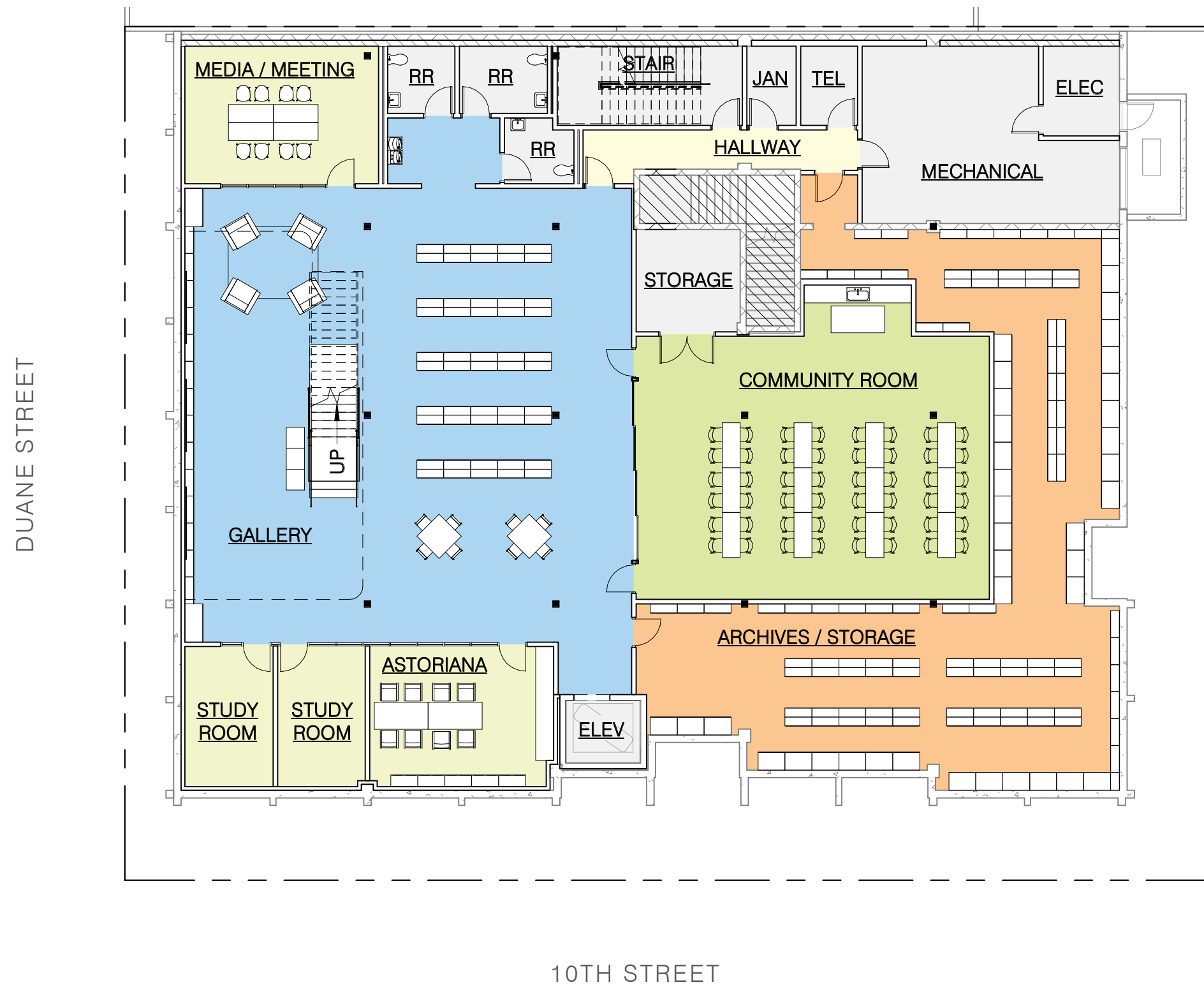


# CURRENT BUILDING CONCEPTS

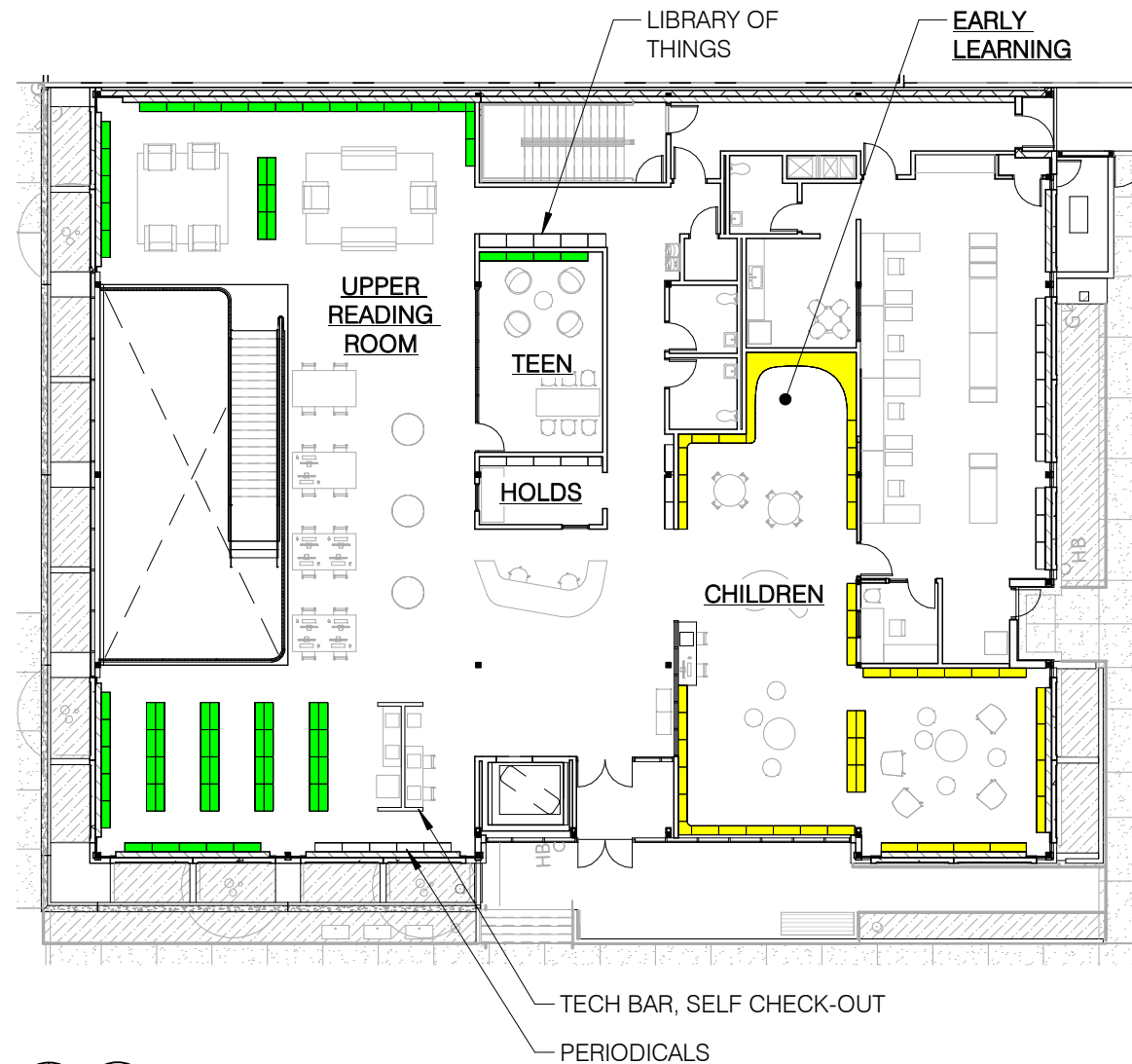
# FIRST FLOOR PLAN



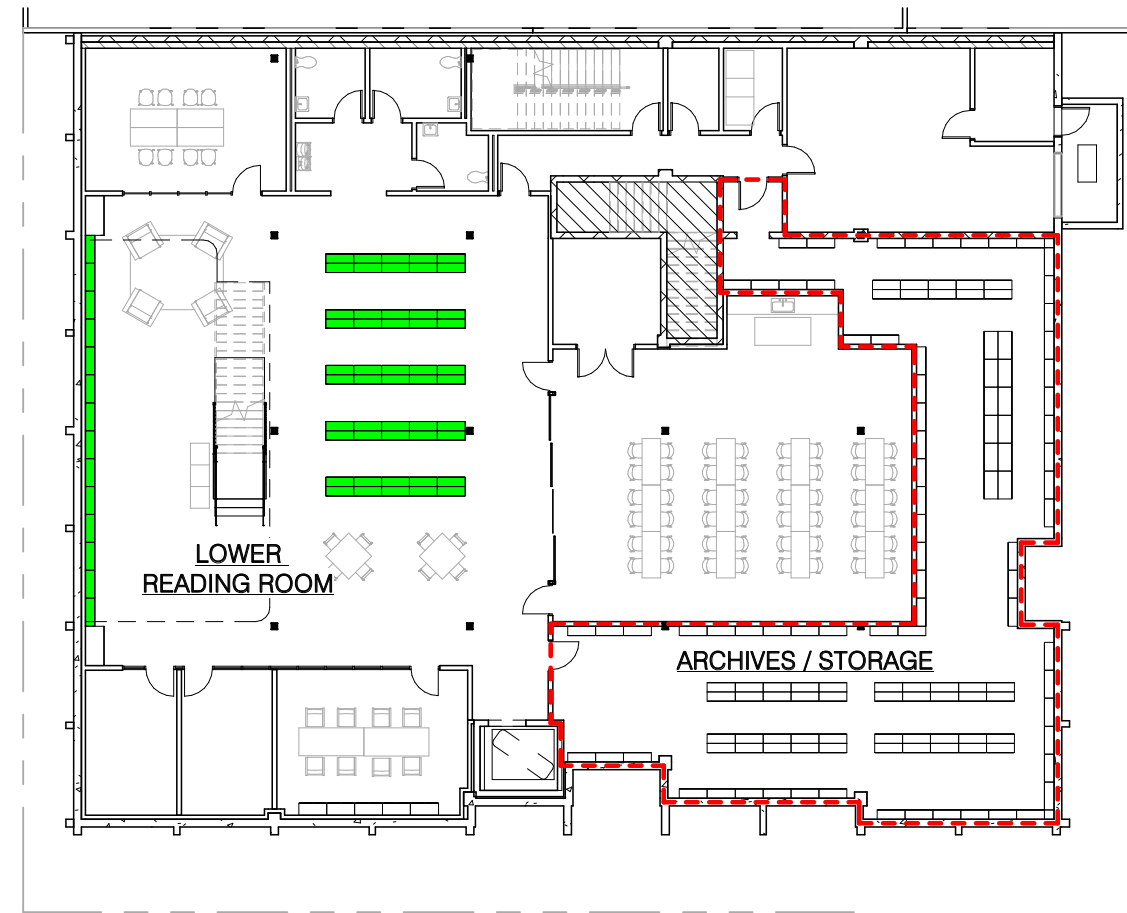
# BASEMENT FLOOR PLAN



# LIBRARY COLLECTION PLANS

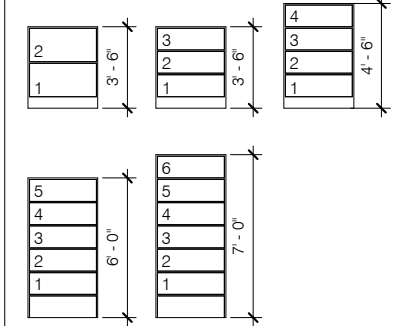


2 LEVEL 1 FLOOR PLAN  
1" = 20'-0"



1 BASEMENT FLOOR PLAN  
1" = 20'-0"

**TYPICAL STACKS**  
12" NOMINAL SHELF DEPTH, UNO.  
36" SHELF LENGTH, UNO.



**COLLECTION STACKS**

- ADULT / YOUNG ADULT
- CHILDREN
- ARCHIVES / STORAGE AREA

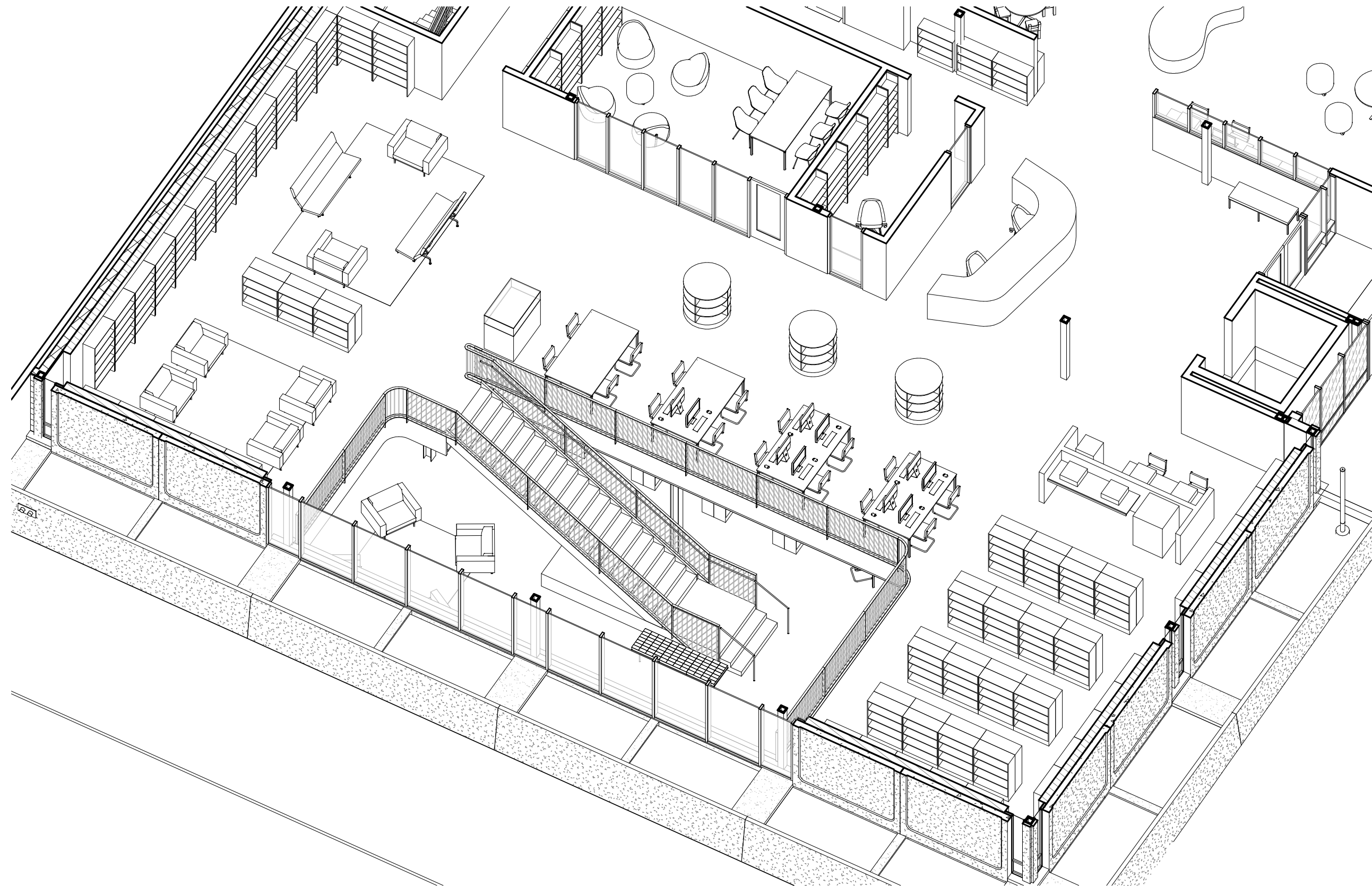


	BOOKS ON SHELVES*	TOTAL COLLECTION
ADULT, BASEMENT	6,270	6,967
ADULT, LEVEL 1	8,663	9,625
CHILDREN, LEVEL 1	7,733	8,592
<b>COMBINED TOTALS</b>	<b>22,666</b>	<b>25,184</b>

\*ASSUMING AVERAGE 10% CHECKOUT RATE

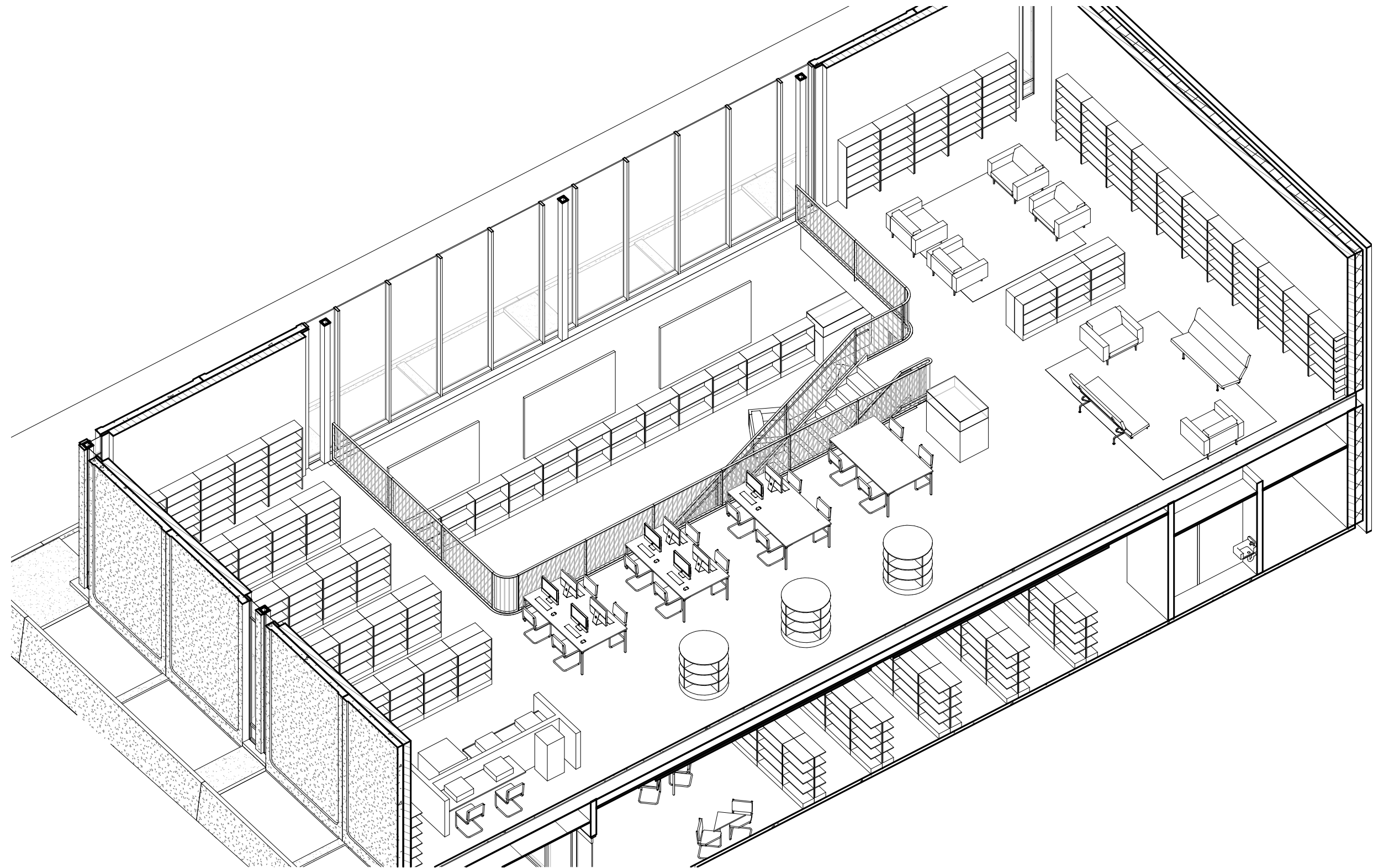


# READING ROOM VIEW

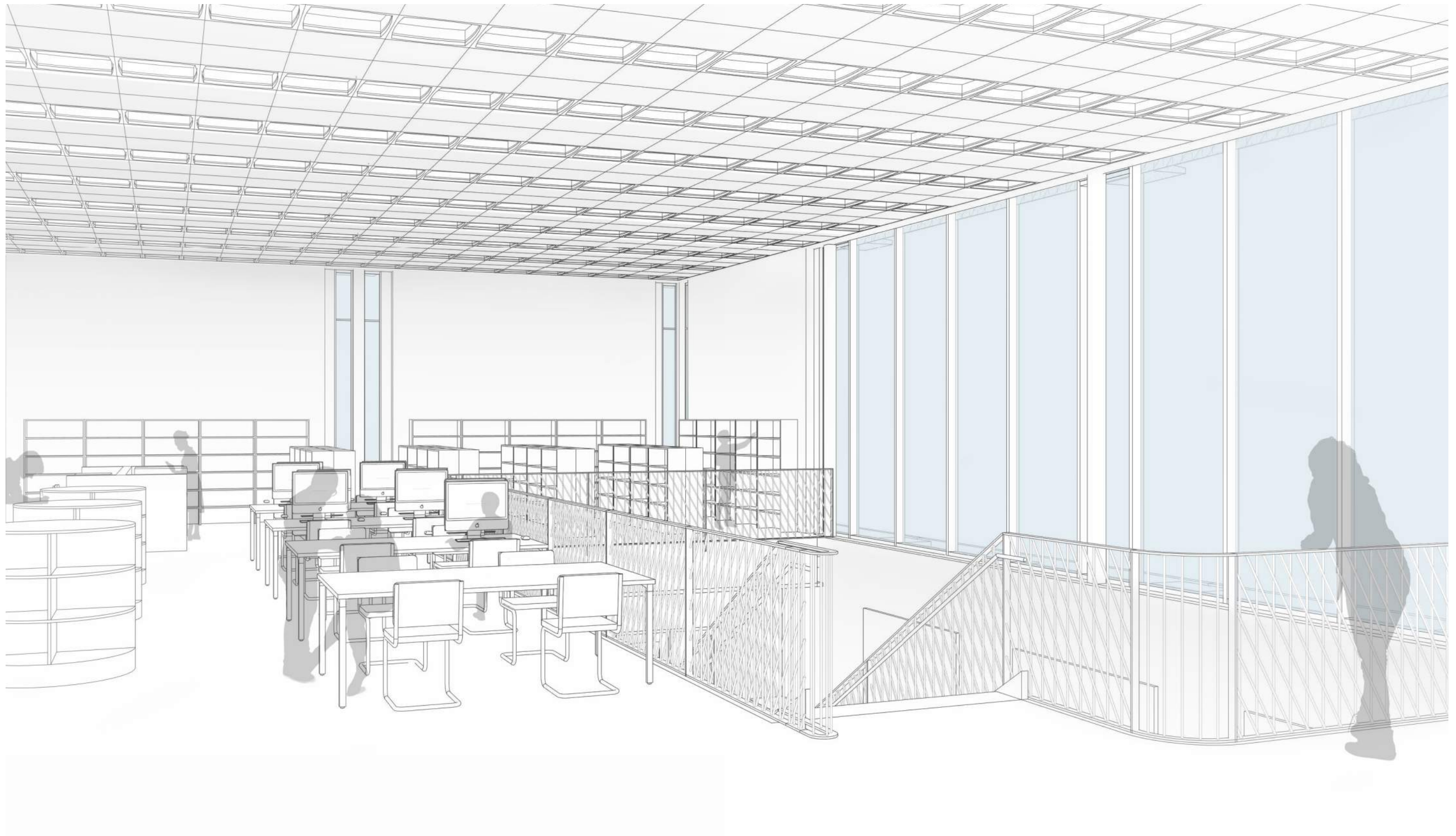




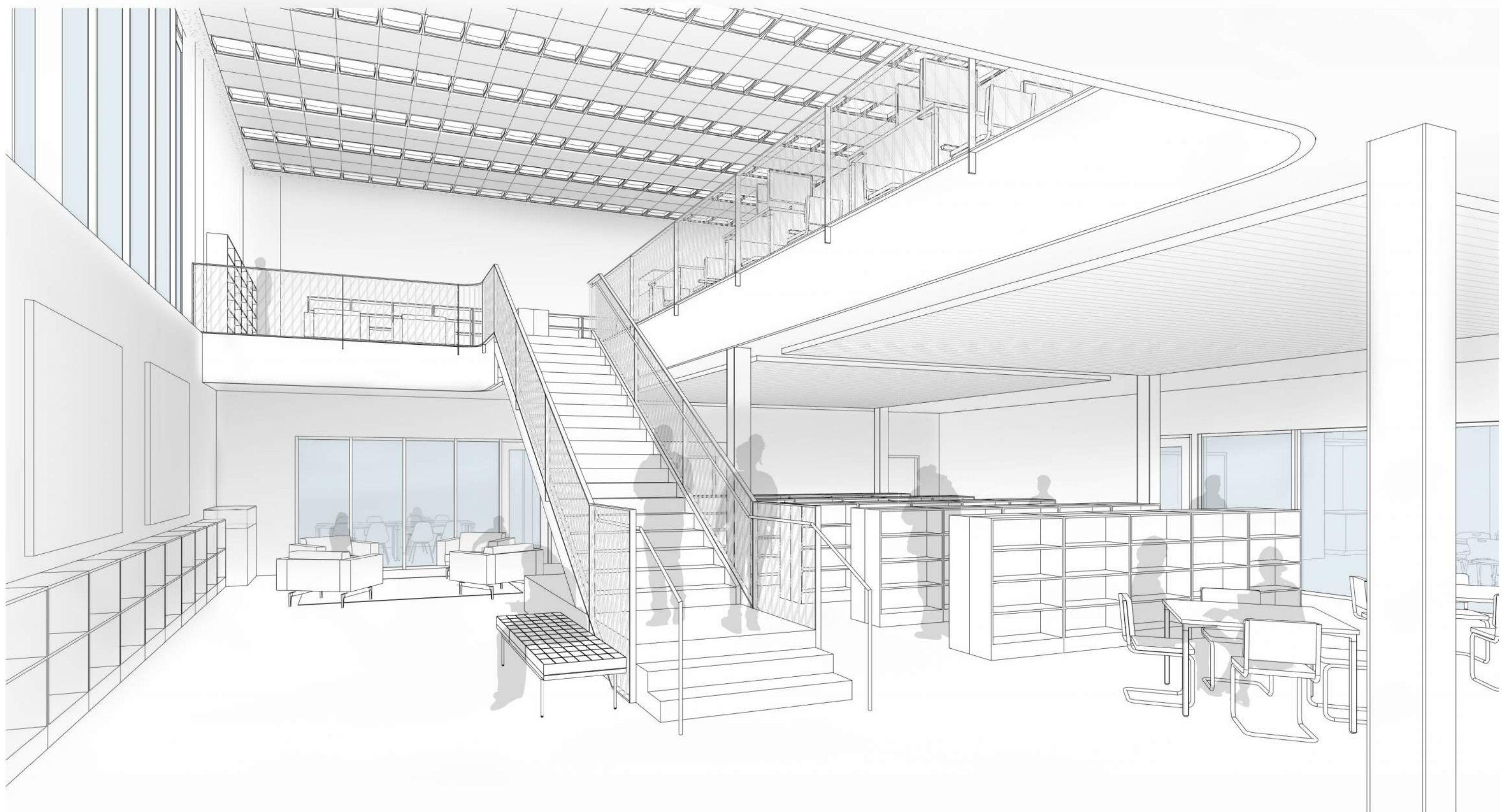
# READING ROOM VIEW



# READING ROOM VIEW







# EXTERIOR PERSPECTIVE





# EXTERIOR PERSPECTIVE

